

TRANSITION	ALT	14 000
TRANSITION	LVL	FL 140

SEOUL	APP	119.75
		119.1
GIMPO	TWR	118.1
		118.05

RNAV GUKDO 2U, RNAV KARBU 2U

ELEV. ALT IN FEET
DIST IN NM
BRG ARE MAG
VAR 9° W

True North

NOTE
 1. RNAV 1 operation.
 2. GNSS or DME/DME/IRU required.
 3. ATS surveillance service required.

GENERAL INFORMATION
 1. Maximum holding speed is 250 kt IAS at DU063, 200 kt IAS at DOKDO.
 RNAV OLMEU TWO UNIFORM ARRIVAL : OLMEU - DU066 - KAKSO - DU063 - SUPOM - SEL - DU030 - DU025 - DU022 - DU018 - DOKDO
 RNAV GUKDO TWO UNIFORM ARRIVAL : GUKDO - GU069 - DU063 - SUPOM - SEL - DU030 - DU025 - DU022 - DU018 - DOKDO
 RNAV KARBU TWO UNIFORM ARRIVAL : KARBU - EGOBA - SEL - DU030 - DU025 - DU022 - DU018 - DOKDO

Scale: 0 10 20 km / 0 5 10 NM

Compass Rose: 190° 2700 280° 3500

MSA 25 NM GIMPPO ARP

AIP AMDT 7/25

Standard Instrument Arrival Procedure Coding Tables

RNAV OLMEN 2U

Serial Number	Path Descriptor	Waypoint Identifier	Fly-over	Course/Track °M(°T)	Distance (NM)	Turn direction	Altitude (ft)	Speed (kt)	Coordinates	VPA/RDH	Navigation specification	Remarks
001	IF	OLMEN	-	-	-	-	+FL 160	-	36°44'13.4"N 126°59'27.6"E	-	RNAV 1	-
002	TF	DU066	-	051 (042.7)	23.4	-	@FL 150	-	37°01'25.6"N 127°19'16.4"E	-	RNAV 1	-
003	TF	KAKSO	-	052 (043.0)	8.6	-	-	-250	37°07'44.6"N 127°26'37.4"E	-	RNAV 1	Bank angle 25°
004	TF	DU063	-	009 (000.3)	6.1	-	-	-250	37°13'49.2"N 127°26'39.5"E	-	RNAV 1	Bank angle 25°
005	TF	SUPOM	-	313 (304.8)	14.0	-	+12 000	-	37°21'46.7"N 127°12'17.2"E	-	RNAV 1	-
006	TF	SEL	-	292 (283.0)	13.6	-	-9 000 +8 000	-	37°24'49.0"N 126°55'42.1"E	-	RNAV 1	-
007	TF	DU030	-	302 (293.8)	6.6	-	@8 000	-	37°27'28.2"N 126°48'09.4"E	-	RNAV 1	-
008	TF	DU025	-	298 (289.5)	5.2	-	+7 000	-	37°29'12.0"N 126°42'00.0"E	-	RNAV 1	-
009	TF	DU022	-	287 (278.0)	5.0	-	-	-	37°29'53.6"N 126°35'48.1"E	-	RNAV 1	-
010	TF	DU018	-	324 (315.0)	6.0	-	-	-220	37°34'09.7"N 126°30'26.7"E	-	RNAV 1	-
011	TF	DOKDO	-	054 (045.0)	3.0	-	+4 000	-220	37°36'17.1"N 126°33'07.1"E	-	RNAV 1	IAF

RNAV GUKDO 2U

Serial Number	Path Descriptor	Waypoint Identifier	Fly-over	Course/Track °M(°T)	Distance (NM)	Turn direction	Altitude (ft)	Speed (kt)	Coordinates	VPA/RDH	Navigation specification	Remarks
001	IF	GUKDO	-	-	-	-	+FL 160	-	37°01'10.9"N 127°38'22.6"E	-	RNAV 1	-
002	TF	GU069	-	344 (334.9)	10.0	-	-	-250	37°10'14.9"N 127°33'04.6"E	-	RNAV 1	-
003	TF	DU063	-	314 (304.9)	6.2	-	-	-250	37°13'49.2"N 127°26'39.5"E	-	RNAV 1	-
004	TF	SUPOM	-	313 (304.8)	14.0	-	+12 000	-	37°21'46.7"N 127°12'17.2"E	-	RNAV 1	-
005	TF	SEL	-	292 (283.0)	13.6	-	-9 000 +8 000	-	37°24'49.0"N 126°55'42.1"E	-	RNAV 1	-
006	TF	DU030	-	302 (293.8)	6.6	-	@8 000	-	37°27'28.2"N 126°48'09.4"E	-	RNAV 1	-
007	TF	DU025	-	298 (289.5)	5.2	-	+7 000	-	37°29'12.0"N 126°42'00.0"E	-	RNAV 1	-
008	TF	DU022	-	287 (278.0)	5.0	-	-	-	37°29'53.6"N 126°35'48.1"E	-	RNAV 1	-
009	TF	DU018	-	324 (315.0)	6.0	-	-	-220	37°34'09.7"N 126°30'26.7"E	-	RNAV 1	-
010	TF	DOKDO	-	054 (045.0)	3.0	-	+4 000	-220	37°36'17.1"N 126°33'07.1"E	-	RNAV 1	IAF

SEOUL/Gimpo Intl(RKSS)
RWY 14L/R
RNAV KARBU 2U

AERONAUTICAL DATA TABULATION

Standard Instrument Arrival Procedure Coding Tables

RNAV KARBU 2U										
Serial Number	Path Descriptor	Waypoint Identifier	Fly-over	Course/Track M(T)	Distance (NM)	Turn direction	Altitude (ft)	Speed (kt)	Coordinates	VPA/RDH
001	IF	KARBU	-	-	-	-	-	-	37°31'59.0"N 127°39'52.0"E	-
002	TF	GOBA	-	267 (258.7)	13.9	-	+13 000	-250	37°29'14.7"N 127°22'45.9"E	-
003	TF	SEL	-	267 (258.5)	22.0	-	-9 000 +8 000	-	37°24'49.0"N 126°55'42.1"E	-
004	TF	DU030	-	302 (293.8)	6.6	-	@8 000	-	37°27'28.2"N 126°48'09.4"E	-
005	TF	DU025	-	298 (289.5)	5.2	-	+7 000	-	37°29'12.0"N 126°42'00.0"E	-
006	TF	DU022	-	287 (278.0)	5.0	-	-	-	37°29'53.6"N 126°35'48.1"E	-
007	TF	DU018	-	324 (315.0)	6.0	-	-	-220	37°34'09.7"N 126°30'26.7"E	-
008	TF	DOKDO	-	054 (045.0)	3.0	-	+4 000	-220	37°36'17.1"N 126°33'07.1"E	-
										IAF

HOLDING PROCEDURE										
Holding Identification	Path Descriptor	Waypoint Identifier	Fly-over	Course/Track M(T)	Time (min)	Turn direction	Altitude (ft)	Speed (kt)	Coordinates	VPA/RDH
RNAV OLMEN 2U	-	DU063	Y	314 (304.9)	1.0	L	-FL 150 +12 000	-230	37°13'49.2"N 127°26'39.5"E	-
	-	DOKDO	Y	324 (314.9)	1.0	R	-5 000 +4 000	-200	37°36'17.1"N 126°33'07.1"E	-
RNAV GUKDO 2U	-	DU063	Y	314 (304.9)	1.0	L	-FL 150 +12 000	-230	37°13'49.2"N 127°26'39.5"E	-
	-	DOKDO	Y	324 (314.9)	1.0	R	-5 000 +4 000	-200	37°36'17.1"N 126°33'07.1"E	-
RNAV KARBU 2U	-	GOBA	Y	267 (258.7)	1.5	R	-FL 150 +13 000	-250	37°29'14.7"N 127°22'45.9"E	-
	-	DOKDO	Y	324 (314.9)	1.0	R	-5 000 +4 000	-200	37°36'17.1"N 126°33'07.1"E	-

Change : Information of ALT restriction for holding procedure.

INTENTIONALLY

LEFT

BLANK

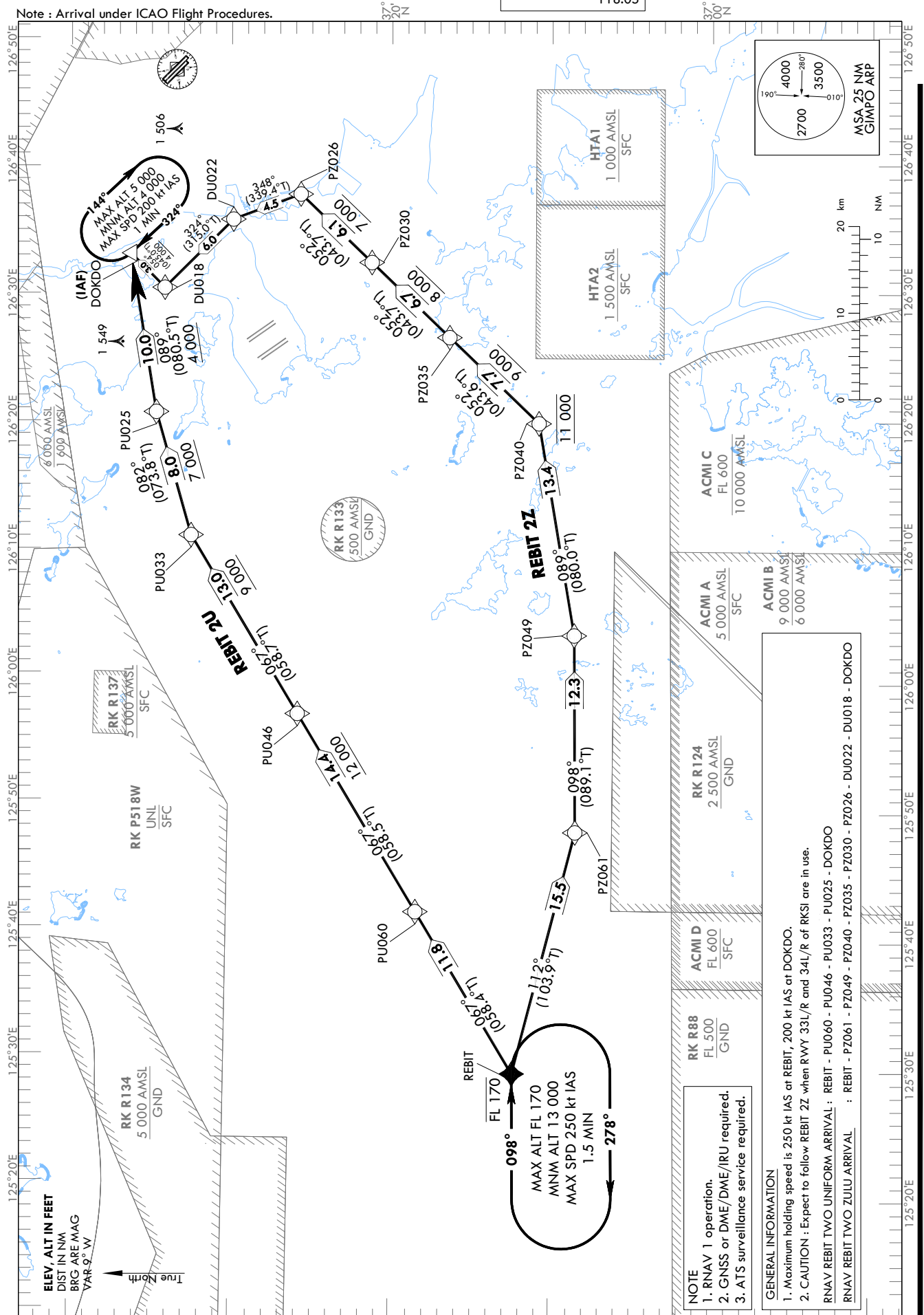
STANDARD ARRIVAL CHART
INSTRUMENT (STAR) - ICAO

TRANSITION ALT 14 000
TRANSITION LVL FL 140

SEOUL APP 119.75
119.1
GIMPO TWR 118.1
118.05

SEOUL/Gimpo Intl(RKSS)
RWY 14L/R
RNAV REBIT 2U, RNAV REBIT 2Z

Note : Arrival under ICAO Flight Procedures.



Change : Amended airspace restrictions and Information of upper limit for RK R88.

Standard Instrument Arrival Procedure Coding Tables

RNAV REBIT 2U

Serial Number	Path Descriptor	Waypoint Identifier	Fly-over	Course/Track °M(°T)	Distance (NM)	Turn direction	Altitude (ft)	Speed (kt)	Coordinates	VPA/RDH	Navigation specification	Remarks
001	IF	REBIT	-	-	-	-	-FL 170	-	37°12'03.0"N 125°29'12.7"E	-	RNAV 1	-
002	TF	PU060	-	067 (058.4)	11.8	-	-	-	37°18'12.6"N 125°41'46.1"E	-	RNAV 1	-
003	TF	PU046	-	067 (058.5)	14.4	-	+12 000	-	37°25'42.2"N 125°57'09.0"E	-	RNAV 1	-
004	TF	PU033	-	067 (058.7)	13.0	-	+9 000	-	37°32'26.0"N 126°11'04.0"E	-	RNAV 1	-
005	TF	PU025	-	082 (073.8)	8.0	-	+7 000	-	37°34'39.1"N 126°20'42.3"E	-	RNAV 1	-
006	TF	DOKDO	-	089 (080.5)	10.0	-	+4 000	-	37°36'17.1"N 126°33'07.1"E	-	RNAV 1	IAF

RNAV REBIT 2Z

Serial Number	Path Descriptor	Waypoint Identifier	Fly-over	Course/Track °M(°T)	Distance (NM)	Turn direction	Altitude (ft)	Speed (kt)	Coordinates	VPA/RDH	Navigation specification	Remarks
001	IF	REBIT	-	-	-	-	-FL 170	-	37°12'03.0"N 125°29'12.7"E	-	RNAV 1	-
002	TF	PZ061	-	112 (103.9)	15.5	-	-	-	37°08'17.9"N 125°48'04.6"E	-	RNAV 1	-
003	TF	PZ049	-	098 (089.1)	12.3	-	-	-	37°08'28.1"N 126°03'25.2"E	-	RNAV 1	-
004	TF	PZ040	-	089 (080.0)	13.4	-	@11 000	-	37°10'46.2"N 126°19'55.9"E	-	RNAV 1	-
005	TF	PZ035	-	052 (043.6)	7.7	-	+9 000	-	37°16'22.3"N 126°26'36.8"E	-	RNAV 1	-
006	TF	PZ030	-	052 (043.7)	6.7	-	+8 000	-	37°21'14.9"N 126°32'26.8"E	-	RNAV 1	-
007	TF	PZ026	-	052 (043.7)	6.1	-	+7 000	-	37°25'41.7"N 126°37'46.9"E	-	RNAV 1	-
008	TF	DU022	-	348 (339.4)	4.5	-	-	-	37°29'53.6"N 126°35'48.1"E	-	RNAV 1	-
009	TF	DU018	-	324 (315.0)	6.0	-	-	-220	37°34'09.7"N 126°30'26.7"E	-	RNAV 1	-
010	TF	DOKDO	-	054 (045.0)	3.0	-	+4 000	-220	37°36'17.1"N 126°33'07.1"E	-	RNAV 1	IAF

HOLDING PROCEDURE

Holding Identification	Path Descriptor	Waypoint Identifier	Fly-over	Course/Track °M(°T)	Time (min)	Turn direction	Altitude (ft)	Speed (kt)	Coordinates	VPA/RDH	Navigation specification	Remarks
RNAV REBIT 2U	-	REBIT	Y	098 (089.1)	1.5	R	-FL 170 +13 000	-250	37°12'03.0"N 125°29'12.7"E	-	RNAV 1	-
	-	DOKDO	Y	324 (314.9)	1.0	R	-5 000 +4 000	-200	37°36'17.1"N 126°33'07.1"E	-	RNAV 1	-
RNAV REBIT 2Z	-	REBIT	Y	098 (089.1)	1.5	R	-FL 170 +13 000	-250	37°12'03.0"N 125°29'12.7"E	-	RNAV 1	-
	-	DOKDO	Y	324 (314.9)	1.0	R	-5 000 +4 000	-200	37°36'17.1"N 126°33'07.1"E	-	RNAV 1	-

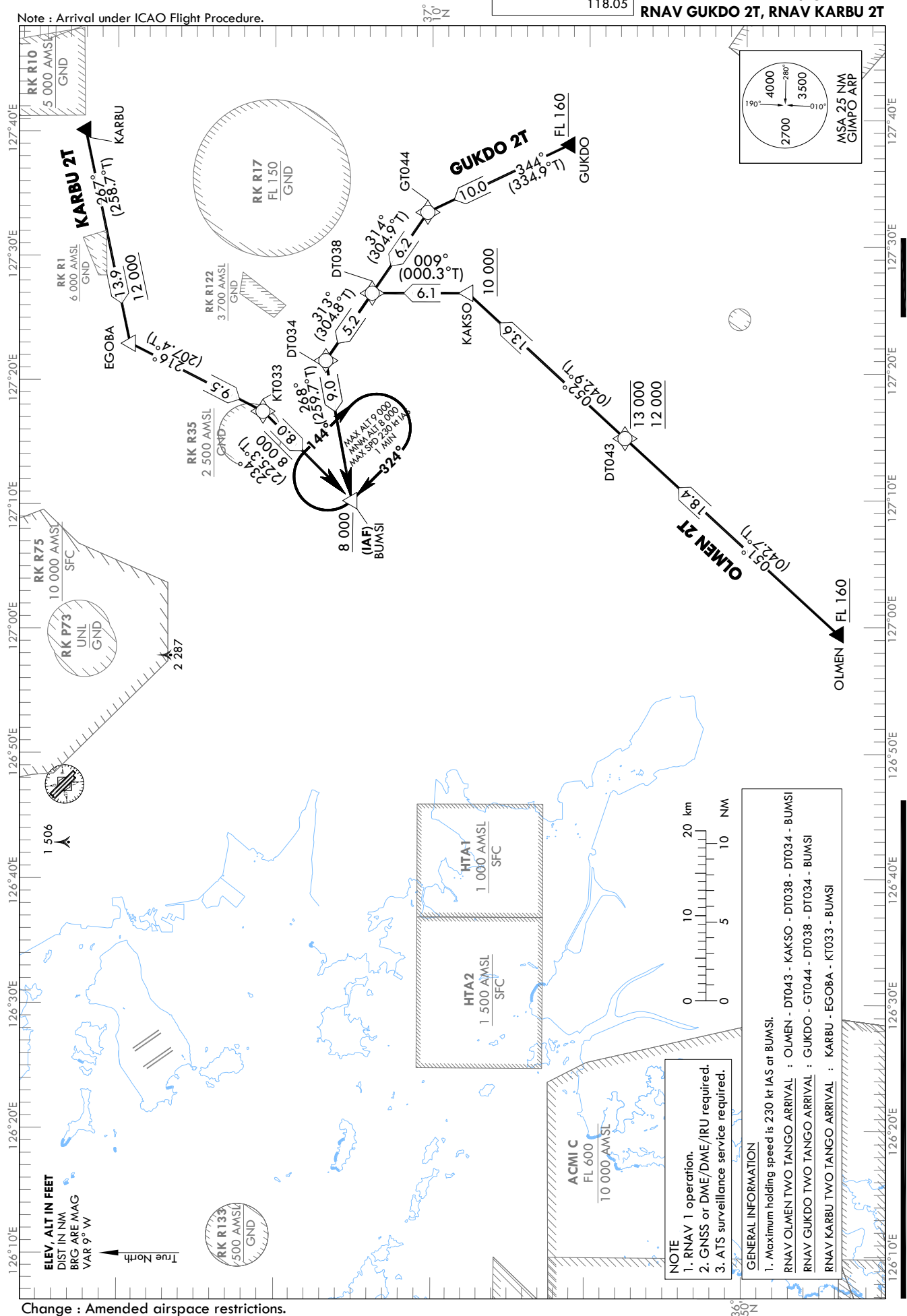
STANDARD ARRIVAL CHART
INSTRUMENT (STAR) - ICAO

TRANSITION ALT 14 000
TRANSITION LVL FL 140

SEOUL APP 119.75
119.1
GIMPO TWR 118.1
118.05

SEOUL/Gimpo Intl(RKSS)
RWY 32L/R
RNAV OLMEN 2T
RNAV GUKDO 2T, RNAV KARBU 2T

Note : Arrival under ICAO Flight Procedure.



Change : Amended airspace restrictions.

SEOUL/Gimpo Intl(RKSS)

RWY 32L/R

RNAV OLMEN 2T

RNAV GUKDO 2T, RNAV KARBU 2T

AERONAUTICAL DATA TABULATION

Standard Instrument Arrival Procedure Coding Tables

RNAV OLMEN 2T

Serial Number	Path Descriptor	Waypoint Identifier	Fly-over	Course/Track °M(°T)	Distance (NM)	Turn direction	Altitude (ft)	Speed (kt)	Coordinates	VPA/RDH	Navigation specification	Remarks
001	IF	OLMEN	-	-	-	-	+FL 160	-	36°44'13.4"N 126°59'27.6"E	-	RNAV 1	-
002	TF	DT043	-	051 (042.7)	18.4	-	-13 000 +12 000	-	36°57'45.7"N 127°15'01.2"E	-	RNAV 1	-
003	TF	KAKSO	-	052 (042.9)	13.6	-	+10 000	-250	37°07'44.6"N 127°26'37.4"E	-	RNAV 1	Bank angle 25°
004	TF	DT038	-	009 (000.3)	6.1	-	-	-250	37°13'49.2"N 127°26'39.5"E	-	RNAV 1	Bank angle 25°
005	TF	DT034	-	313 (304.8)	5.2	-	-	-250	37°16'47.4"N 127°21'18.3"E	-	RNAV 1	Bank angle 25°
006	TF	BUMSI	-	268 (259.7)	9.0	-	+8 000	-	37°15'10.2"N 127°10'09.6"E	-	RNAV 1	IAF

RNAV GUKDO 2T

Serial Number	Path Descriptor	Waypoint Identifier	Fly-over	Course/Track °M(°T)	Distance (NM)	Turn direction	Altitude (ft)	Speed (kt)	Coordinates	VPA/RDH	Navigation specification	Remarks
001	IF	GUKDO	-	-	-	-	+FL 160	-	37°01'10.9"N 127°38'22.9"E	-	RNAV 1	-
002	TF	GT044	-	344 (334.9)	10.0	-	-	-250	37°10'14.9"N 127°33'04.6"E	-	RNAV 1	-
003	TF	DT038	-	314 (304.9)	6.2	-	-	-250	37°13'49.2"N 127°26'39.5"E	-	RNAV 1	-
004	TF	DT034	-	313 (304.8)	5.2	-	-	-250	37°16'47.4"N 127°21'18.3"E	-	RNAV 1	-
005	TF	BUMSI	-	268 (259.7)	9.0	-	+8 000	-	37°15'10.2"N 127°10'09.6"E	-	RNAV 1	IAF

RNAV KARBU 2T

Serial Number	Path Descriptor	Waypoint Identifier	Fly-over	Course/Track °M(°T)	Distance (NM)	Turn direction	Altitude (ft)	Speed (kt)	Coordinates	VPA/RDH	Navigation specification	Remarks
001	IF	KARBU	-	-	-	-	-	-	37°31'59.0"N 127°39'52.0"E	-	RNAV 1	-
002	TF	EG08A	-	267 (258.7)	13.9	-	+12 000	-250	37°29'14.7"N 127°22'45.9"E	-	RNAV 1	-
003	TF	KT033	-	216 (207.4)	9.5	-	-	-250	37°20'48.4"N 127°17'17.1"E	-	RNAV 1	-
004	TF	BUMSI	-	234 (225.3)	8.0	-	+8 000	-	37°15'10.2"N 127°10'09.6"E	-	RNAV 1	IAF

HOLDING PROCEDURE

Holding Identification	Path Descriptor	Waypoint Identifier	Fly-over	Course/Track °M(°T)	Time (min)	Turn direction	Altitude (ft)	Speed (kt)	Coordinates	VPA/RDH	Navigation specification	Remarks
RNAV OLMEN 2T	HM	BUMSI	Y	324 (315.2)	1.0	R	-9 000 +8 000	-230	37°15'10.2"N 127°10'09.6"E	-	RNAV 1	-
RNAV GUKDO 2T	HM	BUMSI	Y	324 (315.2)	1.0	R	-9 000 +8 000	-230	37°15'10.2"N 127°10'09.6"E	-	RNAV 1	-
RNAV KARBU 2T	HM	BUMSI	Y	324 (315.2)	1.0	R	-9 000 +8 000	-230	37°15'10.2"N 127°10'09.6"E	-	RNAV 1	-

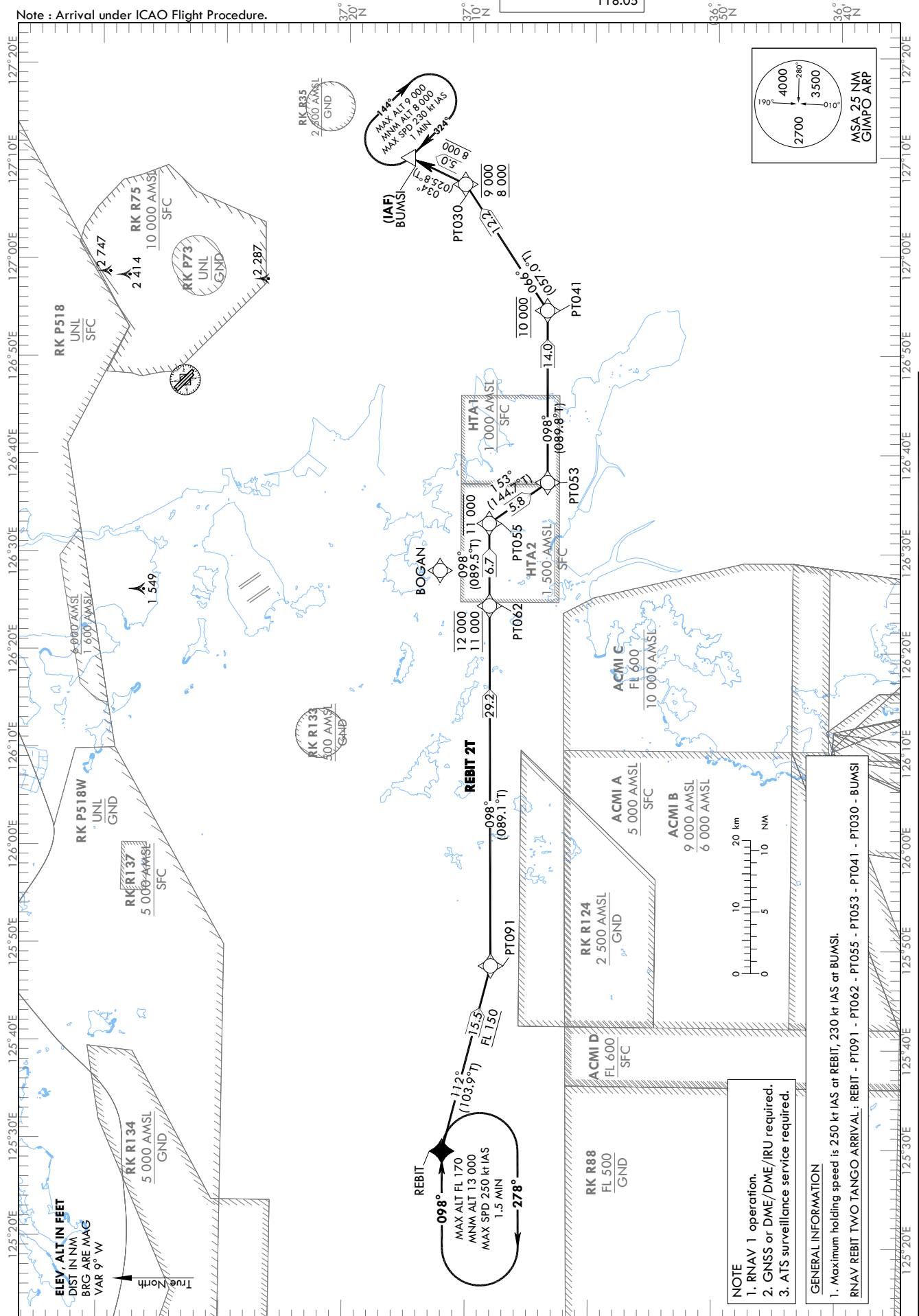
STANDARD ARRIVAL CHART
INSTRUMENT (STAR) - ICAO

TRANSITION ALT 14 000
TRANSITION LVL FL 140

SEOUL APP 119.75
119.1
GIMPO TWR 118.1
118.05

SEOUL/Gimpo Intl(RKSS)
RWY 32L/R
RNAV REBIT 2T

Note : Arrival under ICAO Flight Procedure.



Change : Amended airspace restrictions and Information of upper limit for RK R88.

AERONAUTICAL DATA TABULATION

Standard Instrument Arrival Procedure Coding Tables

RNAV REBIT 2T

Serial Number	Path Descriptor	Waypoint Identifier	Fly-over	Course/Track M(T)	Distance (NM)	Turn direction	Altitude (ft)	Speed (kt)	Coordinates	VPA/ RDH	Navigation specification	Remarks
001	IF	REBIT	-	-	-	-	-	-	37°12'03.0"N 125°29'12.7"E	-	RNAV 1	-
002	TF	PT091	-	112 (103.9)	15.5	-	+FL 150	-	37°08'17.9"N 125°48'04.6"E	-	RNAV 1	-
003	TF	PT062	-	098 (089.1)	29.2	-	-12 000 +11 000	-	37°08'38.9"N 126°24'37.4"E	-	RNAV 1	-
004	TF	PT055	-	098 (089.5)	6.7	-	-11 000	-	37°08'42.1"N 126°32'59.3"E	-	RNAV 1	-
005	TF	PT053	-	153 (144.7)	5.8	-	-	-	37°03'58.4"N 126°37'09.6"E	-	RNAV 1	-
006	TF	PT041	-	098 (089.8)	14.0	-	@10 000	-	37°04'00.5"N 126°54'36.0"E	-	RNAV 1	-
007	TF	PT030	-	066 (057.0)	12.2	-	-9 000 +8 000	-	37°10'39.8"N 127°07'26.2"E	-	RNAV 1	-
008	TF	BUMSI	-	034 (025.8)	5.0	-	+8 000	-	37°15'10.2"N 127°10'09.6"E	-	RNAV 1	IAF

HOLDING PROCEDURE

Holding Identification	Path Descriptor	Waypoint Identifier	Fly-over	Course/Track M(T)	Time (min)	Turn direction	Altitude (ft)	Speed (kt)	Coordinates	VPA/ RDH	Navigation specification	Remarks
RNAV REBIT 2T	HM	REBIT	Y	098 (089.1)	1.5	R	-FL 170 +13 000	-250	37°12'03.0"N 125°29'12.7"E	-	RNAV 1	-
	HM	BUMSI	Y	324 (315.2)	1.0	R	-9 000 +8 000	-230	37°15'10.2"N 127°10'09.6"E	-	RNAV 1	-

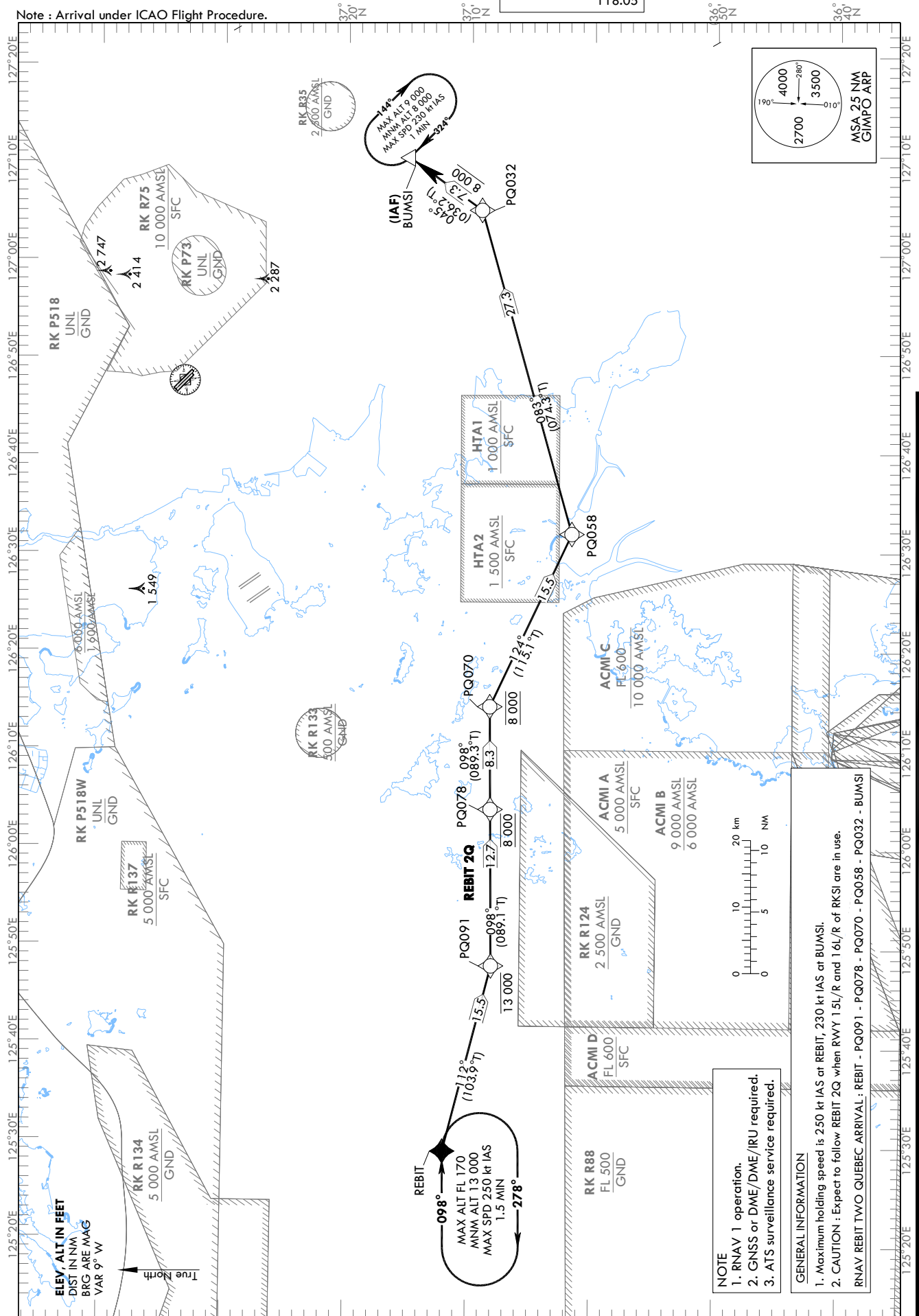
STANDARD ARRIVAL CHART
INSTRUMENT (STAR) - ICAO

TRANSITION ALT 14 000
TRANSITION LVL FL 140

SEOUL APP 119.75
119.1
GIMPO TWR 118.1
118.05

SEOUL/Gimpo Intl(RKSS)
RWY 32L/R
RNAV REBIT 2Q

Note : Arrival under ICAO Flight Procedure.



Change : Amended airspace restrictions and Information of upper limit for RK R88.

AERONAUTICAL DATA TABULATION

Standard Instrument Arrival Procedure Coding Tables

RNAV REBIT 2Q												
Serial Number	Path Descriptor	Waypoint Identifier	Fly-over	Course/Track °M(T)	Distance (NM)	Turn direction	Altitude (ft)	Speed (kt)	Coordinates	VPA/ RDH	Navigation specification	Remarks
001	IF	REBIT	-	-	-	-	-	-	37°12'03.0"N 125°29'12.7"E	-	RNAV 1	-
002	TF	PQ091	-	112 (103.9)	15.5	-	-13 000	-	37°08'17.9"N 125°48'04.6"E	-	RNAV 1	-
003	TF	PQ078	-	098 (089.1)	12.7	-	@8 000	-	37°08'28.4"N 126°03'57.4"E	-	RNAV 1	-
004	TF	PQ070	-	098 (089.3)	8.3	-	@8 000	-	37°08'34.2"N 126°14'23.0"E	-	RNAV 1	-
005	TF	PQ058	-	124 (115.1)	15.5	-	-	-	37°01'58.7"N 126°31'54.3"E	-	RNAV 1	-
006	TF	PQ032	-	083 (074.3)	27.3	-	-	-	37°09'17.5"N 127°04'47.1"E	-	RNAV 1	-
007	TF	BUMSI	-	045 (036.2)	7.3	-	+8 000	-	37°15'10.2"N 127°10'09.6"E	-	RNAV 1	IAF

HOLDING PROCEDURE												
Holding Identification	Path Descriptor	Waypoint Identifier	Fly-over	Course/Track °M(°T)	Time (min)	Turn direction	Altitude (ft)	Speed (kt)	Coordinates	VPA/ RDH	Navigation specification	Remarks
RNAV REBIT 2Q	HM	REBIT	Y	098 (089.1)	1.5	R	-FL 170 +13 000	-250	37°12'03.0"N 125°29'12.7"E	-	RNAV 1	-
	HM	BUMSI	Y	324 (315.2)	1.0	R	-9 000 +8 000	-230	37°15'10.2"N 127°10'09.6"E	-	RNAV 1	-

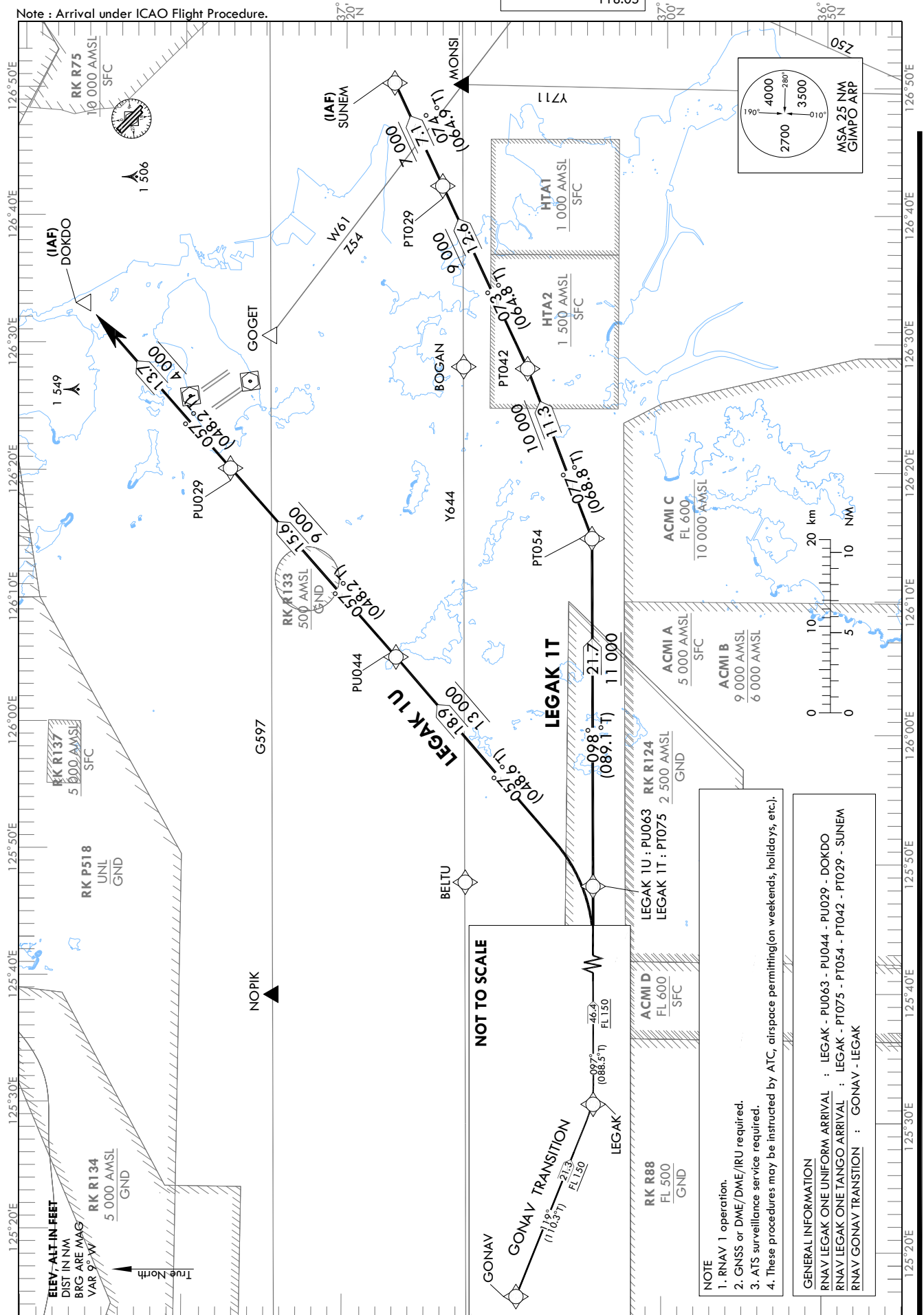
STANDARD ARRIVAL CHART
INSTRUMENT (STAR) - ICAO

TRANSITION ALT 14 000
TRANSITION LVL FL 140

SEOUL APP 119.75
119.1
GIMPO TWR 118.1
118.05

SEOUL/Gimpo Intl(RKSS)
RWY 14L/R, RWY 32L/R
RNAV LEGAK 1U, RNAV LEGAK 1T

Note : Arrival under ICAO Flight Procedure.



Change : Amended airspace restrictions, chart symbol(OBST) and Information of OBST(1 540 → 1 549), upper limit for RK R88.

SEOUL/Gimpo Intl(RKSS)
RWY 14L/R, RWY 32L/R
RNAV LEGAK 1U, RNAV LEGAK 1T
RNAV GONAV TRANSITION

AERONAUTICAL DATA TABULATION

Standard Instrument Arrival Procedure Coding Tables

RNAV LEGAK 1U

Serial Number	Path Descriptor	Waypoint Identifier	Fly-over	Course/Track °M(°T)	Distance (NM)	Turn direction	Altitude (ft)	Speed (kt)	Coordinates	VPA/RDH	Navigation specification	Remarks
001	IF	LEGAK	-	-	-	-	+FL 150	-	37°03'21.0"N 124°49'51.1"E	-	RNAV 1	-
002	TF	PU063	-	097 (088.5)	46.4	-	+FL 150	-	37°04'17.6"N 125°47'50.3"E	-	RNAV 1	-
003	TF	PU044	-	057 (048.6)	18.9	-	+13 000	-	37°16'44.9"N 126°05'33.1"E	-	RNAV 1	-
004	TF	PU029	-	057 (048.2)	15.6	-	+9 000	-	37°27'10.1"N 126°20'12.3"E	-	RNAV 1	-
005	TF	DOKDO	-	057 (048.4)	13.7	-	+4 000	-	37°36'17.1"N 126°33'07.1"E	-	RNAV 1	IAF

RNAV LEGAK 1T

Serial Number	Path Descriptor	Waypoint Identifier	Fly-over	Course/Track °M(°T)	Distance (NM)	Turn direction	Altitude (ft)	Speed (kt)	Coordinates	VPA/RDH	Navigation specification	Remarks
001	IF	LEGAK	-	-	-	-	+FL 150	-	37°03'21.0"N 124°49'51.1"E	-	RNAV 1	-
002	TF	PT075	-	097 (088.5)	46.4	-	+FL 150	-	37°04'17.6"N 125°47'50.3"E	-	RNAV 1	-
003	TF	PT054	-	098 (089.1)	21.7	-	+11 000	-	37°04'34.8"N 126°14'54.2"E	-	RNAV 1	-
004	TF	PT042	-	077 (068.8)	11.3	-	+10 000	-	37°08'40.3"N 126°28'06.7"E	-	RNAV 1	-
005	TF	PT029	-	073 (064.8)	12.6	-	+9 000	-	37°14'00.7"N 126°42'19.8"E	-	RNAV 1	-
006	TF	SUNEM	-	074 (064.9)	7.1	-	+7 000	-	37°17'00.6"N 126°50'21.9"E	-	RNAV 1	IAF

RNAV GONAV TRANSITION

Serial Number	Path Descriptor	Waypoint Identifier	Fly-over	Course/Track °M(°T)	Distance (NM)	Turn direction	Altitude (ft)	Speed (kt)	Coordinates	VPA/RDH	Navigation specification	Remarks
001	IF	GONAV	-	-	-	-	-	-	37°10'48.4"N 124°24'52.6"E	-	RNAV 1	-
002	TF	LEGAK	-	119 (110.3)	21.3	-	+FL 150	-	37°03'21.0"N 124°49'51.1"E	-	RNAV 1	-